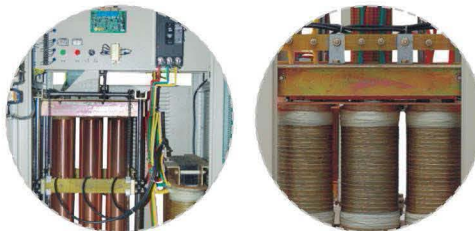


SBW Series AC. Automatic Voltage Regulator

MAIN FEATURES

- 1、 Large capacity, high precision
- 2、 Adopted compensating voltage technology
- 3、 Wide input voltage range
- 4、 Over voltage protection
- 5、 Output voltage three phase auto-balance
- 6、 With bypass system
- 7、 Anolog, LED, LCD display optional

DISPLAYS FOR SELECTION



SBW-50KVA SBW-100KVA

WORKING PRINCIPLE

The stabilizers consist of compensating circuits, control circuits, check circuits and operated circuits etc. The electrical principle diagram is shown as Fig 1:

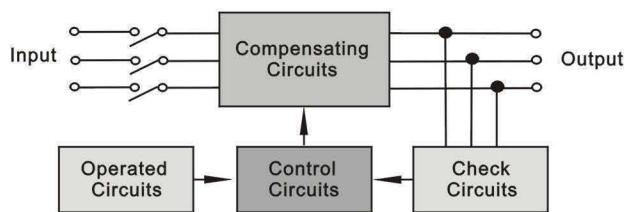
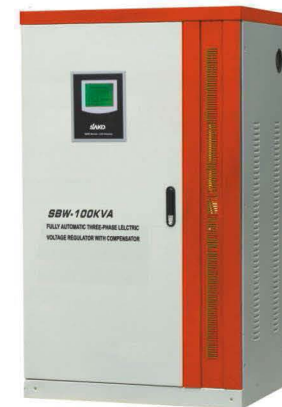


Fig 1 Electrical principle diagram of Self Compensating Supply voltage stabilizer. The primary winding connection of control and transforming voltage regulator AT is in Y-shape connected to the output end of voltage stabilizer, and connecting transformer is series-connected in the main circuit, taking phase A as an example to indicate the working principle of the voltage stabilizing as shown in Fig 2. If the voltage drop of the impedance of the compensating transformer is negligible, it can be seen from Fig 2: $U_{out} = U_{in} + \Delta U$

Where: U_{in} – input voltage of phase A of the stabilizer;
 U_{out} – output voltage of phase A of phase A of the stabilizer;
 ΔU – compensating voltage of phase A of the stabilizer;



SBW-50KVA SBW-100KVA

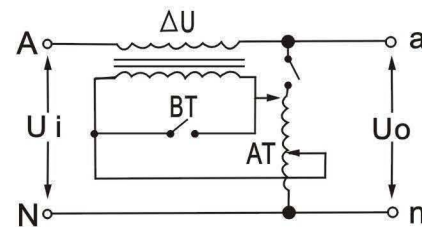
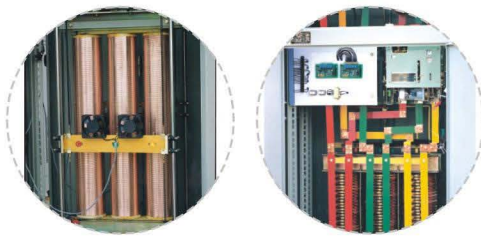


Fig 2 Compensating Circuit Principle

the principle is: when input voltage U_{in} phase A increase ΔU_{in} , compensating voltage ΔU

SBW Series Superpower Voltage Regulator

SBW-600KVA



SBW-300KVA



SBW-600KVA

DISPLAYS FOR SELECTION



TECHNICAL PARAMETER: (Special design)

Specification		SBW-20KVA	SBW-30KVA	SBW-50KVA	SBW-100KVA	SBW-150KVA	SBW-180KVA	SBW-200KVA	SBW-250KVA	SBW-300KVA	SBW-350KVA	SBW-400KVA	SBW-500KVA	SBW-600KVA	SBW-1000KVA
Input	Phase	Three phase													
	Voltage	AC266V~494V													
	Frequency	50Hz/60Hz													
Output	Voltage	380V±3%													
	Frequency	50Hz/60Hz													
Protection	Low Volt.	318V±7V													
	Over Volt.	426V±7V													
	By pass	Yes (AUTO/MANUAL Optional)													
	Over load /short Circuit	Yes													
Packaging	Pcs per Carton	1													2
	Shipping Wt.(KG)	240	280	330	480	780	850	950	1050	1180	1300	1400	1600	1860	2500
	Package Dimensions (mm)	660×1480×890			750×970×1625			875×1940×1250			1355×1060×2270			1360×1215×2350	
Efficiency	AC-AC	>95%													
Acoustic	Noise level	≤50dB													
Environmental	Temperature	-5°C~45°C Degree													
	Humidity	20% to 90%													